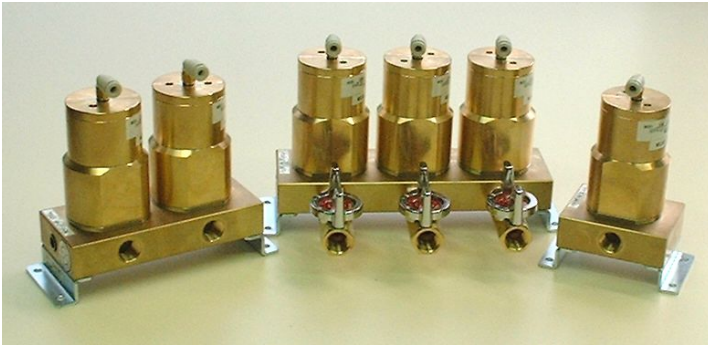


NL-S2 Series NON-LEAK SELECT VALVE



FEATURES

- ★ Perfect for Air leak test circuits.
- ★ Number of valves are selectable among Single, Dual and Triple.
- ★ Valve type can be selected from Normally open and Normally close.
- ★ Air filter is attached to each port.
- ★ Stop Valve can be attached to each port upon request

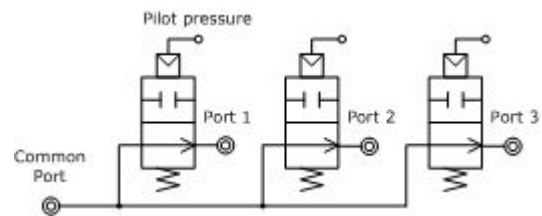
SPECIFICATIONS

Pressure Range	Middle Pressure: 0 to 700 kPa Vacuum Pressure: 0 to -100 kPa
Connection	Rc 1/4 (PT-1/4 Female)
Orifice Diameter	Φ5
Leak Threshold	Less than 0.007 mL/min
Pilot Pressure	400 to 700 kPa One-touch fitting for 4mm tube is attached to the port.

CIRCUIT EXAMPLE

NL-S2-30M

(Triple valves, Normally open, Medium pressure)

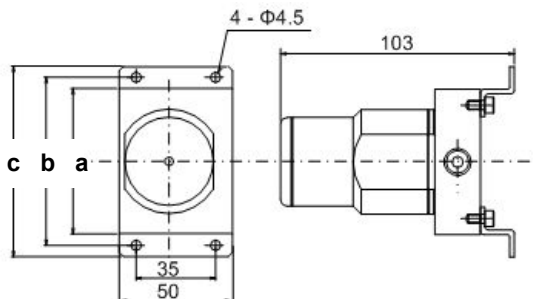


MODEL CLASSIFICATIONS

NL-S2 - **A B C** - **D**

A: Number of valves	1: Single valve	2: Dual valves	3: Triple valves
B: Spec	0: Normally Open 1: Normally Close	0: Normally Open 1: Normally Close 2: NO and NC 1 each	0: Normally Open 1: Normally Close
C: Pressure	M: Medium Pressure V: Vacuum		
D: Optional Spec	B: Each port comes with a stop valve		

EXTERNAL APPEARANCE



	Single	Dual	Triple
a	64	114	164
b	74	124	174
c	84	134	184

[mm]