

# PRODUCT INFORMATION

# AIR LEAK TESTER

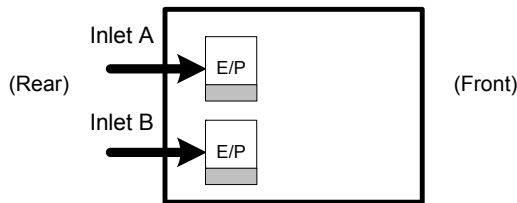


**LS-R910**  
Designed for switching  
between two test  
pressures

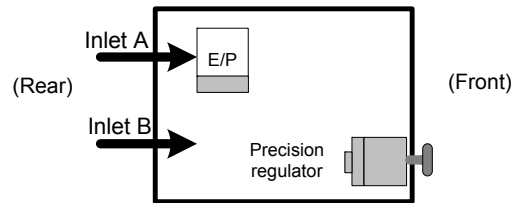
The large frame body developed with the basic specification of LS-R900 offers a feature to switch between 2 test pressures (Inlet A and Inlet B). The combination of the 2 pressures (Inlet A and Inlet B) can be selected from the Grade Table. Up to two EP regulators can be set in the leak tester.

## Examples of the combination of 2 test pressure circuits

< EP regulator x 2 >



< EP regulator and Precision regulator >



\* E/P: Electropneumatic regulator

## Test pressure combinations

\* Symbols for E/P regulator  
MR: Medium pressure E/P  
LR: Low pressure E/P  
VR: Vacuum pressure E/P

• Applicable		Inlet A						
		MR	LR	M	L	L02	H20	H49
Inlet B	MR						•	•
	LR	•		•			•	•
	VR	•	•	•	•	•	•	•
	M						•	•
	L	•		•			•	•
	L02	•		•			•	•
	V	•	•	•	•	•	•	•

## Model Classifications

LS-R910-(1)(2)(3)(4)(5)

(1)	Pneumatic circuit	A1: Intelligent 1 Pneumatic Circuit, A2: Intelligent 2 Pneumatic Circuit AS1: Small Volume A1 Circuit, AS01: Micro Volume Circuit, C: Secondary Pressure Circuit	
(2)	Pressure range (Inlet A)	EP Regulator Model	LR: 10 to 95kPa, MR: 50 to 800kPa, VR: -5 to -75kPa
		Regulator Model	L02: 5 to 20kPa, L: 10 to 100kPa, M: 50 to 800kPa H20: Up to 2.0MPa *1, H49: Up to 4.9MPa *1
(3)	Pressure range (Inlet B)	EP Regulator Model	LR: 10 to 95kPa, VR: -5 to -75kPa
		Regulator Model	L02: 5 to 20kPa, L: 10 to 100kPa, M: 50 to 800kPa, V: -5 to -100kPa
(4)	Option	J: Leak Master K05: With ALC-05 (0.5mL), K1: With ALC-1 (1mL) K4: With ALC-4 (4mL), K10: With ALC-10 (10mL) B: Bypass Circuit (without Precision Regulator), B1: Bypass Circuit Ready (with Precision Regulator) *2 D: Differential pressure sensor range: ±10kPa	
(5)	Power cable	VA: Attached for AC125V, 3 m VE: Attached for AC250V, 2 m	

\*1: The Regulator is not attached for H20 and H49.

\*2: B and B1 are available only for Inlet B.

## Features << Screens specific to R-910 >>

< Measurement screen (Advanced) >



< Inlet selecting displays >



< Charge-Hold display >



\* The display language can be switched between English, Japanese, and Chinese.



Parts to be tested (Works) are pressurized

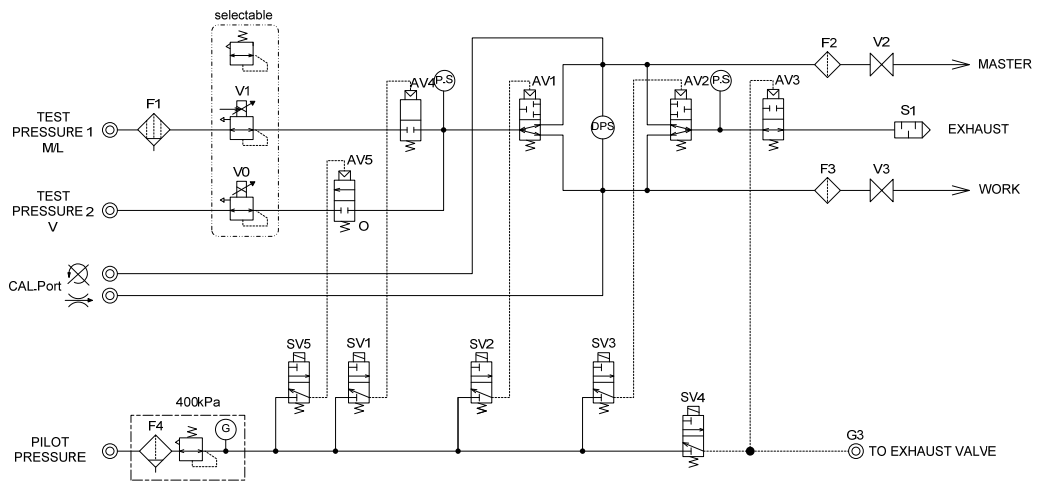


Parts to be tested (Works) are not pressurized.

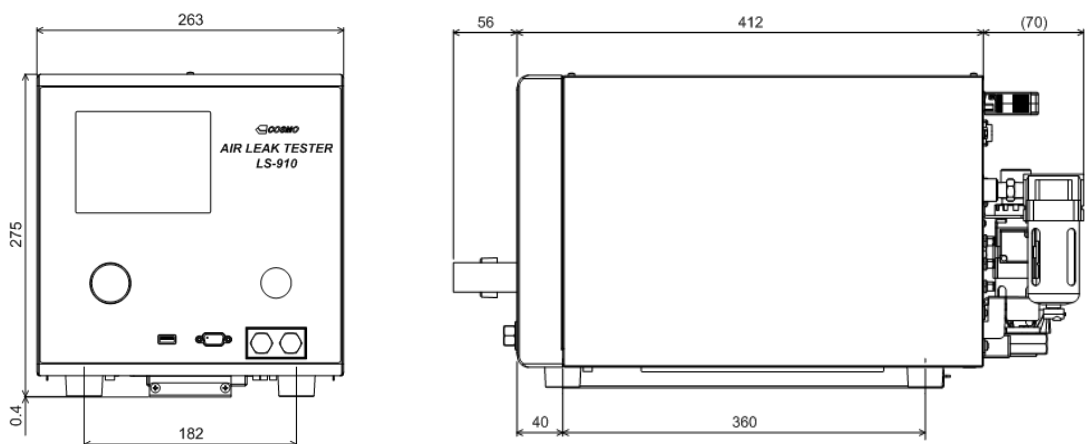
\* Even without closing the stop valves, the test pressure can be regulated.

## Pneumatic Circuit

< Intelligent 2 (A2) Pneumatic Circuit (Medium (M) / Low (L), Vacuum (V)) >



## External Appearance



\* The contents of this Product Information are as of July 2015. The information is subject to change without prior notice.

**COSMO INSTRUMENTS CO., LTD.**  
2974-23 Ishikawa Hachioji, Toyo Japan  
Phone: +81-(0)42-642-1357 Fax: +81-(0)42-646-2439  
<http://www.cosmo-k.co.jp/>

China  
Korea  
Taiwan  
Malaysia  
Thailand

Indonesia  
Vietnam  
India  
Germany  
U.K.

U.S.A.  
Mexico  
Brazil  
Australia