

# PRODUCT INFORMATION

## Air Leak Tester for micro volume parts




# LS-R740 SS




**LS-R740SS performs highly sensitive leak test on micro volume parts. The part to be tested is set on a fixture, and inside of the part is pressurized to measure the pressure change generated by leak.**




**Products requiring high leak detection capability**

- Injector
- Solenoid valve
- Pressure sensor
- Pump



### Features

-  Easy-to-navigate and intuitive interface with simple menu configuration
-  Waveform Display of Test pressure and Differential pressure
-  Influence of noise generated in the test on the part can be compensated, reducing test time.

-  User selectable multi-language capability: English, Japanese and Chinese
-  USB Port for easy test data management
-  Closer placement of sensor section to the target capsule

### Specification

Differential Pressure	Resolution	0.1 Pa
	Display Range	±999.9Pa, (Accuracy guaranteed range ±1000Pa)
	Reading Accuracy	±2.5% of rdg ±1Pa, 50Pa or lower: ±2Pa
Display Unit	Sensor Proof Pressure	5 MPa
	Test Pressure	kPa, MPa (kg/cm <sup>2</sup> , PSI, bar, mmHg, etc.)
	Leak	Pa, kPa, mL/s, mL/min, L/min, Pa m <sup>3</sup> /s, E-3 Pa m <sup>3</sup> /s, Pa/s, Pa/min, *Pa/s, *Pa/min (mmH <sub>2</sub> O, mmHg, inH <sub>2</sub> O, etc.)
	K(Ve) (Leak coefficient)	mL, L (in <sup>3</sup> , ft <sup>3</sup> )
Leak Display		4 digits Sampling rate: 10 times/s
Leak Limit		Up to ±999.9 Pa
Number of Channels		32 channels (#0 to #31)
Timers		Up to 999.9 s (Resolution: 0.1 s)
Power Source		100 to 240 VAC ±10% at 50/60 Hz, 70 VA max
Ambient Temperature		5 to 45°C
Humidity		80 %RH or less / No dew condensation
Weight		Controller: about 2.6 kg Pneumatic unit: about 7.1 kg

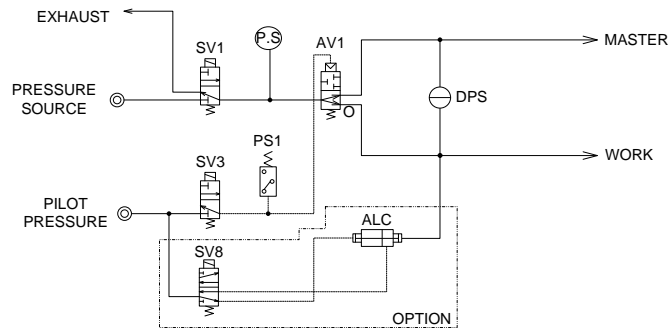
Test Pressure source	Clean air regulated to the test pressure. The source pressure must be sufficiently higher than the test pressure.	
Pilot Pressure	Set using the pilot pressure filter regulator installed. Range: 400 to 700kPa	
Port Size	Ø6mm one-touch joint: Pilot pressure source, Test pressure source Special joint: WORK and MASTER ports	
CPU	SH-2A 144MHz, DRAM8MB	
RS-232C (D-sub 9 pins)	I/F fixed length	Test parameters as well as test results are transmitted.
	ID/F fixed length	Only test results are transmitted.
	T/F fixed length	Only test results are transmitted.
	Others	Special formats
USB Port	Test data	Judgment, Leak, Test pressure, Channel#, Timers, etc.
	Test parameter	Test parameters of all the settings screens
Standard Accessories	Pilot pressure filter regulator, Quick Mounting Brackets, Control I/O connector, Power cord, Inspection record, Operation manual CD, Traceability documents	

## Model Classification

LS-R740SS-1 2 3 4 5

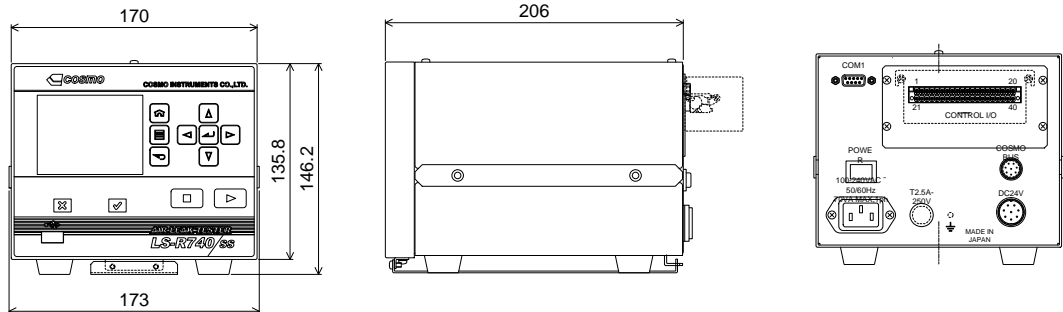
1	Test circuit	Y circuit	Y	Tester circuit with minimum internal volume
2	Test pressure	Low	L	Test pressure range: 10 to 100 kPa
		Medium	M	Test pressure range: 50 to 500kPa
		Vacuum	V	Test pressure range: -5 to -100 kPa
3	Option	Calibration port	JX	Leak Master can be mounted.
		ALC 0.1	K01	Volume displacement: 0 to 0.1 mL
		ALC 0.01	K001	Volume displacement: 0 to 0.01 mL
		Panel mount	P	The controller is designed to be panel-mounted.
4	Sensor sensitivity	Ks = 0.005 mL/kPa	KX1	Standard
		Ks = 0.025mL/kPa	KX05	Option
5	Cable Length specified	Unit-to-unit cable 3 m	S3	Standard.
		Unit-to-unit cable 5 m	S5	Option.
		Unit-to-unit cable 10 m	S10	Option.

## Pneumatic Circuit

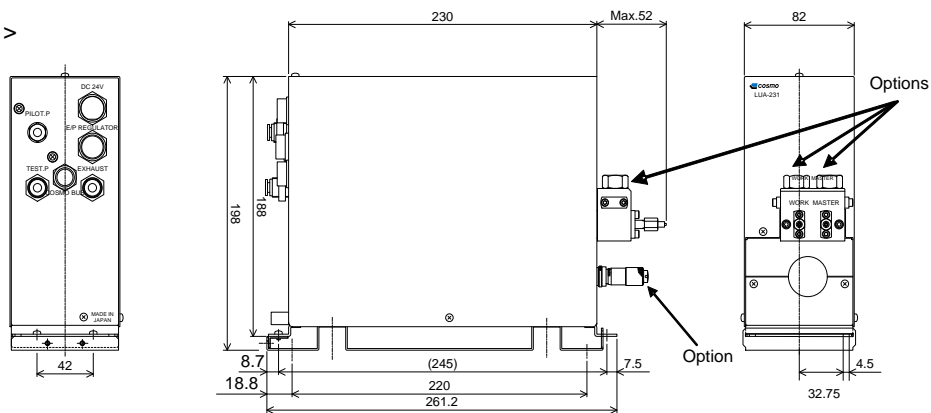


## External Appearance

< Controller >



< Pneumatic Unit >



\* The content in this product information is as of January 2015. The specifications are subject to change without prior notice.

**Cosmo Instruments Co., Ltd.**

<http://www.cosmo-k.co.jp/>

**Head Office:**

2974-23 Ishikawa, Hachioji, Tokyo 192-0032  
Phone: +81-(0)42-642-1357 Fax: +81-(0)42-646-2439

**Overseas Contact:**

China, Korea, Taiwan, Malaysia, Thailand, Indonesia  
Vietnam, India, Germany, UK, USA, Mexico, Brazil, Australia